

# The three-tier climate change risk assessment process of CoastAdapt



1

## first-pass risk screening

applicable in C-CADS Step 1

resource use: **LOW** \$



**In-house desktop study using available information and maps**



**Quick screening of climate change related hazards and risks**



**Outcomes should help you to:**

- Prioritise systems that need further attention
- Identify which stakeholders to engage in second-pass assessment
- Obtain organisational buy-in.

resource use: **MEDIUM** \$ \$

## second-pass risk assessment

applicable in C-CADS Step 2

2

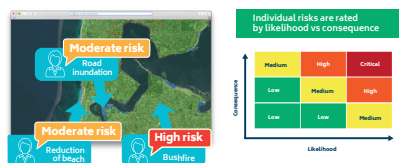


**Outcomes should be used to:**

- Develop an adaptation plan using different steps of C-CADS
- Assess need for any third-pass (site specific) assessment (e.g. extreme risk to a critical system)
- Target new data and information.



**Expert or consultant opinion to rate individual risks**



**Conduct a workshop with stakeholders using available information and maps**

Possible stakeholders:

- Roads
- Environment
- Stormwater
- Tourism
- Power supply
- Coastal planners



Third-pass risk assessment may be required if risks determined in second-pass risk assessment are high

3

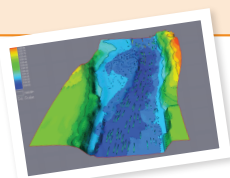
## third-pass risk assessment

applicable in second iterations of C-CADS Step 2

resource use: **HIGH** \$ \$ \$



**Undertake detailed site-specific hazard studies (new models, data)**



**Detailed estimation of when the risk will cross the tolerable limit and require action**



**Output can help to:**

- Underpin preparation of engineering solutions
- Stage implementation of action.

